



SHREE L. R. TIWARI DEGREE COLLEGE

(Arts | Commerce | Science)

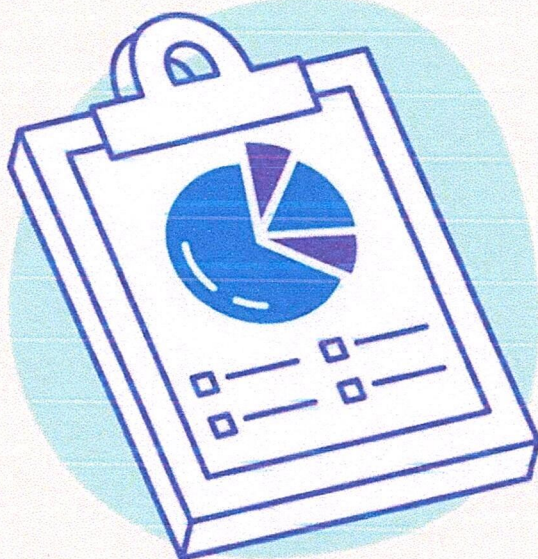
Approved by Government of Maharashtra & Affiliated to University of Mumbai

Research Cell of Shree L. .R. Tiwari Degree College

Organises Webinar on

CRAFTING SCHOLARLY EXCELLENCE

A Guide to Writing a Research Paper



Dr. Sanjay Mishra



19th August 2021



11:30am onwards

Asst. Prof Amna Hussain
Research co-ordinator

Dr. Sanjay Mishra
I/C principal



PIONEERING EDUCATION
SINCE 1992

SHREE L. R. TIWARI DEGREE COLLEGE

(Arts | Commerce | Science)

Approved by Government of Maharashtra & Affiliated to University of Mumbai

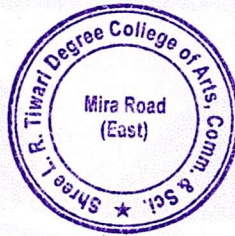
Notice No.: SLRTDC/21-22/

Date: 12th August, 2021

NOTICE

Research, Innovation, Incubation and IPR Cell in collaboration with BMS Dept. of Shree L. R. Tiwari Degree College invites students for a Webinar on “Crafting Scholarly Excellence: A Guide to Writing a Research Paper”. The session will be taken by the principal Dr. Sanjay Mishra. The Webinar will be conducted on 19th August, 2021 at 11:30 AM.

Asst. Prof. Amna Hussain
Research Cell Co-ordinator



Dr. Sanjay Mishra
H/C Principal
Shree L. R. Tiwari Degree College of Arts, Comm. & Sci.
Kanakia Park, Mira Road (East),
Dist. Thane - 401107. Maharashtra

Shree.L.R.Tiwari Educational Campus, Mira Road (E), Thane-401107, Maharashtra.

slrtdc@rahuleducation.com

www.slrtdc.in

1800 210 1002



SHREE L. R. TIWARI DEGREE COLLEGE

(Arts | Commerce | Science)

Approved by Government of Maharashtra & Affiliated to University of Mumbai

Report on

Crafting Scholarly Excellence: A Guide to Writing a Research Paper

Objectives-

- Provide an overview of the research paper writing process, including planning, organizing, and drafting.
- Introduce effective strategies for conducting thorough research and gathering credible sources.
- Share insights on structuring and formatting a research paper in accordance with academic standards.
- Highlight the importance of clarity, coherence, and originality in scholarly writing.
- Offer tips on efficient proofreading and editing to enhance the quality of the research paper.

Methodology-

-Webinar based Interactive method of communication

Date: 19th August, 2021 at 11:30 AM

REPORT

The webinar content was structured and presented by Dr. Sanjay Mishra in a manner that catered to the diverse audience, ranging from students to academic professionals. The speakers covered each aspect of research paper writing thoroughly, providing valuable insights and practical tips.

The discussions on research methodologies, citation styles, and proper referencing were particularly appreciated. Dr. Sanjay Mishra effectively explained the significance of maintaining academic integrity and avoiding plagiarism. Additionally, the interactive Q&A sessions enabled participants to



Shree.L.R.Tiwari Educational Campus, Mira Road (E), Thane-401107, Maharashtra.



SHREE L. R. TIWARI DEGREE COLLEGE

(Arts | Commerce | Science)

Approved by Government of Maharashtra & Affiliated to University of Mumbai

seek clarification and engage in meaningful discussions.

Feedback from Participants:

A feedback survey was conducted after the webinar to gather participants' perspectives. The response was overwhelmingly positive, indicating that the objectives of the webinar were met and the content was well-received. Comprehensive coverage of the research paper writing process, from inception to final draft. Clear and articulate presentations by the speakers, making complex topics more understandable. Practical tips and strategies for improving research paper writing skills. Interactive nature of the webinar, allowing for direct engagement with the speakers.

Conclusion:

The webinar on "Crafting Scholarly Excellence: A Guide to Research Paper Writing" successfully achieved its objectives by providing participants with comprehensive insights into the research paper writing process. The positive feedback received confirms the relevance and effectiveness of the content, showcasing the value of such webinars in enhancing research and academic writing skills.

Asst. Prof. Amna Hussain
Research Cell Co-ordinator



Dr. Sanjay Mishra
I/C ~~Principal~~
Shree L. R. Tiwari Degree College of Arts, Comm. & Sci.,
Kanakia Park, Mira Road (East),
Dist. Thane - 401107. Maharashtra

📍 Shree.L.R.Tiwari Educational Campus, Mira Road (E), Thane-401107, Maharashtra.



slrtdc@rahuleducation.com



www.slrtdc.in



1800 210 1002



SHREE L. R. TIWARI DEGREE COLLEGE

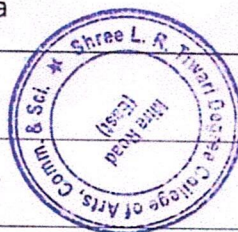
(Arts | Commerce | Science)

Approved by Government of Maharashtra & Affiliated to University of Mumbai

Attendance - Crafting Scholarly Excellence: A Guide to Writing a Research Paper

Date : 19th August 2021

SR. NO.	Name	Dept.
1	Asst. Prof. Saa Sawant	BMS
2	Asst. Prof Kshitij Jha	BSC. IT
3	Asst. Prof Sunil Vishwakarma	BAF
4	Asst. Prof Munira Sayyed	B.COM
5	Asst. Prof Daksha Chaudhary	BAF
6	Asst. Prof Anil Gopale	BBI
7	Asst. Prof Ashwanikumar Dvivedi	B.SC HS
8	Asst. Prof Narayan Paraab	BAMMC
9	Asst. Prof Rambhavan Yadav	B.COM
10	Asst. Prof Sangjukta Haldar	BMS
11	Asst. Prof Madhuridevi Yadav	BAF
12	Prajapati Amishakumari Suresh Kumar	T.Y.B.B.I
13	Sahu Govind Rajkumar	T.Y.B.B.I
14	Sayed Alina Hasan Tabrez	T.Y.B.B.I
15	Sharma Anurag Jitendra	T.Y.B.B.I
16	Sharma Kushal Sunil	T.Y.B.B.I
17	Ray Anjali Awadhkishor	T.Y.BMS



Shree.L.R.Tiwari Educational Campus, Mira Road (E), Thane-401107, Maharashtra.



SHREE L. R. TIWARI DEGREE COLLEGE

(Arts | Commerce | Science)

Approved by Government of Maharashtra & Affiliated to University of Mumbai

Attendance - Crafting Scholarly Excellence: A Guide to Writing a Research Paper

Date : 19th August 2021

SR. NO.	Name	Dept.
18	Routhu Sravani Govindanaidu	T.Y.BMS
19	Sayyed Shadab Shafi Ahmed	T.Y.BMS
20	Sayyed Uneza Irshad	T.Y.BMS
21	Shaikh Muskaan Mukhtar	T.Y.BMS
22	Singh Mukul Kaushal	T.Y.BSC.I.T
23	Singh Rupali Dharmendra	T.Y.BSC.I.T
24	Sonavadekar Krishna Kishore	T.Y.BSC.I.T
25	Syed Abrar Hussain Mohd Quasim Javed	T.Y.BSC.I.T
26	Tiwari Aman	T.Y.BSC.I.T
27	Chouhan Sanowar Bhupener	S.Y.BMM
28	Melisa Wilson Coutinho	S.Y.BMM
29	Dalvi Sabreena Siddique	S.Y.BMM
30	Dsouza Lavesh Eric	S.Y.BMM
31	Dubey Trisha Manoj	S.Y.BMM
32	Dubey Anshika Suresh	S.Y.BMM
33	Ali Afra Asgarali	S.Y.BMM



Shree.L.R.Tiwari Educational Campus, Mira Road (E), Thane-401107, Maharashtra.



SHREE L. R. TIWARI DEGREE COLLEGE

(Arts | Commerce | Science)


Approved by Government of Maharashtra & Affiliated to University of Mumbai

Attendance - Crafting Scholarly Excellence: A Guide to Writing a Research Paper

Date : 19th August 2021

SR. NO.	Name	Dept.
34	Amuloju Yashwant Appalachari	S.Y.BCOM
35	Ansari Nasir Jahid	S.Y.BCOM
36	Ansari Saniya Khalid	S.Y.BCOM
37	Ansurkar Anish Vivek	S.Y.BCOM
38	Baig Nashra Fatima Farheen Mirza	S.Y.BCOM
39	Banduri Sulekha Srikant	S.Y.BCOM
40	Barde Rohan Ashok	S.Y.BCOM



 Shree.L.R.Tiwari Educational Campus, Mira Road (E), Thane-401107, Maharashtra.