



Shree Rahul Education Society's (Regd.)

# SHREE L. R. TIWARI DEGREE COLLEGE

(Arts | Commerce | Science) Approved By Government of Maharashtra & Affiliated To University Of Mumbai | Recognized Under Section 2(f) of the UGC Act 1956 | ISO Certified 9001: 2015 | Hindi Linguistic Minority Institution | COLLEGE CODE : 1064

## Index 7.1.2

Sr. No.	Particulars
1.	<b>Energy Conservation Measures</b>
	a. Replacing Traditional Lights with LED
2.	<b>Management of the various types of degradable and nondegradable waste</b>
	a. Solid waste management
	b. Liquid waste management
3.	<b>Water Conservation</b>
	a. Rainwater Harvesting
	b. Drip irrigation
4.	<b>Green Campus Initiatives</b>
	a. Landscaping with Garden
	b. Plastic Free Campus
	c. Composting Pit
	d. Nursery and Gardening
5.	<b>Disabled Friendly Barrier-Free Environment</b>
	a. Ramp
	b. Elevators
	c. Disabled Friendly Toilet
	d. Wheelchair facility





Shree Rahul Education Society's (Regd.)

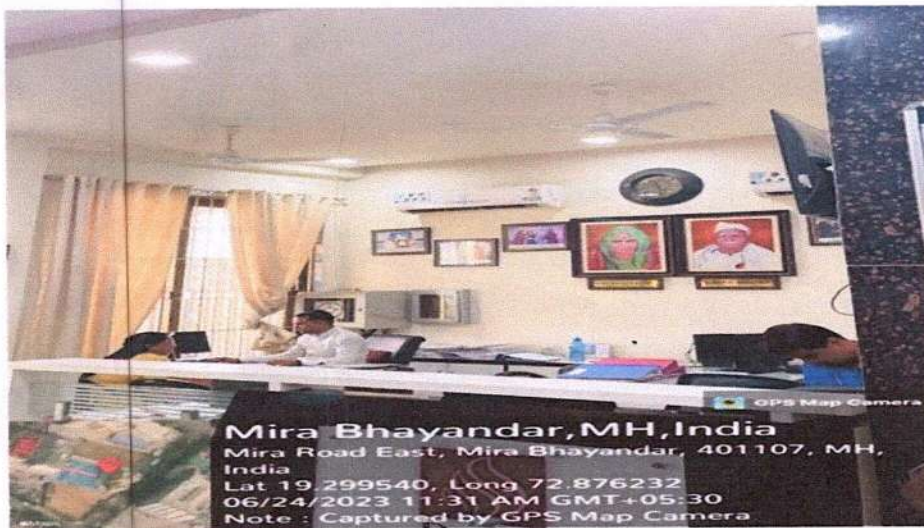
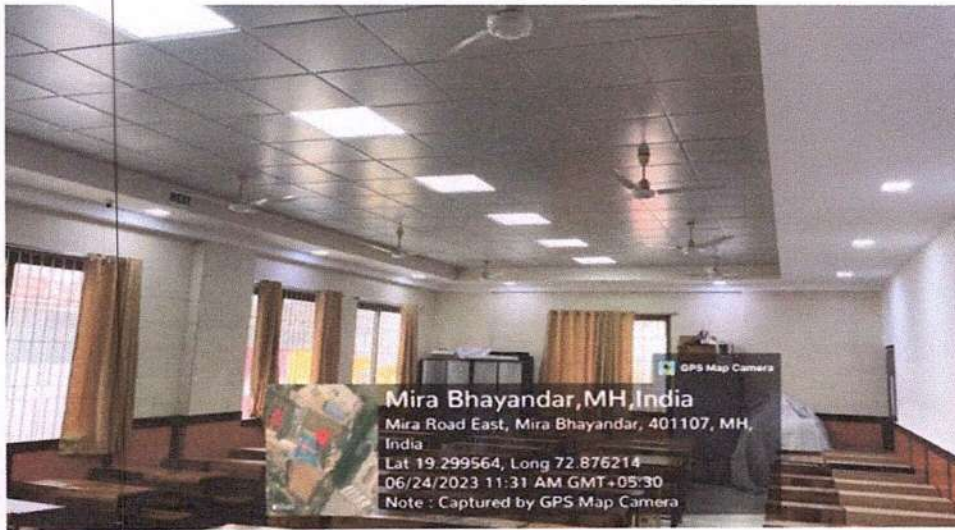
# SHREE L. R. TIWARI DEGREE COLLEGE

(Arts | Commerce | Science) Approved By Government of Maharashtra & Affiliated To University Of Mumbai | Recognized Under Section 2(f) of the UGC Act 1956 | ISO Certified 9001: 2015 | Hindi Linguistic Minority Institution | COLLEGE CODE : 1064

## 1. Alternate sources of energy and energy conservation measures

### a. Replacing Traditional Lights with LED:

The College is in the process of replacing old traditional lights with LED, to save energy saving by reducing energy consumption. The College is replacing all faculty light installations with LED lights.





Shree Rahul Education Society's (Regd.)

# SHREE L. R. TIWARI DEGREE COLLEGE

(Arts | Commerce | Science) Approved By Government of Maharashtra & Affiliated To University Of Mumbai | Recognized Under Section 2(f) of the UGC Act 1956 | ISO Certified 9001: 2015 | Hindi Linguistic Minority Institution | COLLEGE CODE : 1064

## 2. Management of the various types of degradable and nondegradable waste

### a. Solid waste management

Shree L R Tiwari Degree College follows a two-two-bin system to segregate solid waste generated in the college. Solid Waste generated from the college Premises is collected by Housekeeping Staff and stored in the garbage yard, from where it is collected by the Municipal Garbage Van every morning. The College follows a two bin System for waste segregation:

- (a) Green for Degradable Waste,
- (b) Blue for Non-degradable Waste and





Shree Rahul Education Society's (Regd.)

# SHREE L. R. TIWARI DEGREE COLLEGE

(Arts | Commerce | Science) Approved By Government of Maharashtra & Affiliated To University Of Mumbai | Recognized Under Section 2(f) of the UGC Act 1956 | ISO Certified 9001: 2015 | Hindi Linguistic Minority Institution | COLLEGE CODE : 1064

## b. Liquid Waste Management:

The Municipal Corporation's drainage system receives the liquid waste produced in the college. The pipelines that carry liquid waste are kept in good condition. Replace leaking pipes right away. Wastewater is treated by the Corporation before its release into bodies of water.





Shree Rahul Education Society's (Regd.)

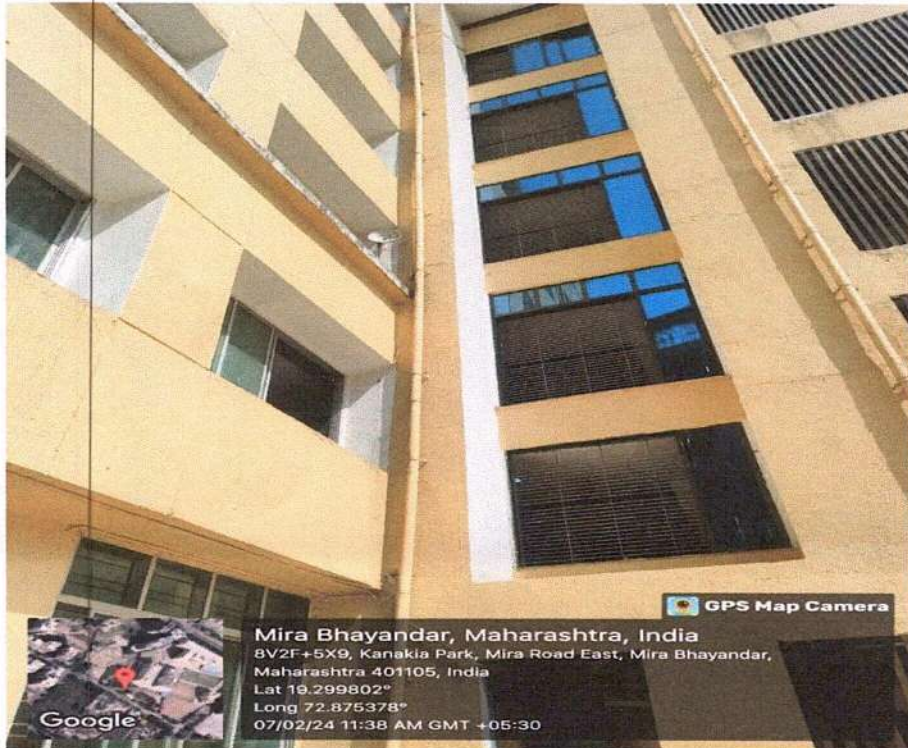
# SHREE L. R. TIWARI DEGREE COLLEGE

(Arts | Commerce | Science) Approved By Government of Maharashtra & Affiliated To University Of Mumbai | Recognized Under Section 2(f) of the UGC Act 1956 | ISO Certified 9001: 2015 | Hindi Linguistic Minority Institution | COLLEGE CODE : 1064

### 3. Water conservation:

#### a. Rain Water Harvesting:

Shree L R Tiwari Degree College has installed a Rain Water Harvesting System for draining rainwater running down from the rooftop to underground sources.





Shree Rahul Education Society's (Regd.)

# SHREE L. R. TIWARI DEGREE COLLEGE

(Arts | Commerce | Science) Approved By Government of Maharashtra & Affiliated To University Of Mumbai | Recognized Under Section 2(f) of the UGC Act 1956 | ISO Certified 9001: 2015 | Hindi Linguistic Minority Institution | COLLEGE CODE : 1064

## b. Drip Irrigation

Shree L.R Tiwari Degree of Arts Commerce and Science has taken the initiative to Drip irrigation or trickle irrigation is a type of micro-irrigation system that has the potential to save water and nutrients by allowing water to drip slowly to the roots of plants, either from above the soil surface or buried below the surface.





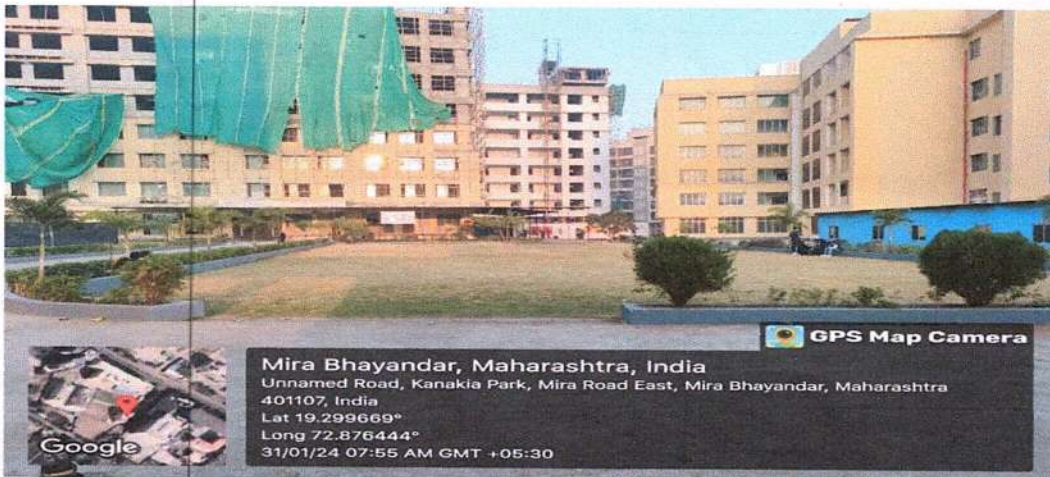
Shree Rahul Education Society's (Regd.)

# SHREE L. R. TIWARI DEGREE COLLEGE

(Arts | Commerce | Science) Approved By Government of Maharashtra & Affiliated To University Of Mumbai | Recognized Under Section 2(f) of the UGC Act 1956 | ISO Certified 9001: 2015 | Hindi Linguistic Minority Institution | COLLEGE CODE : 1064

## 4. Green Campus Initiatives:

### a. Landscaping with Garden:





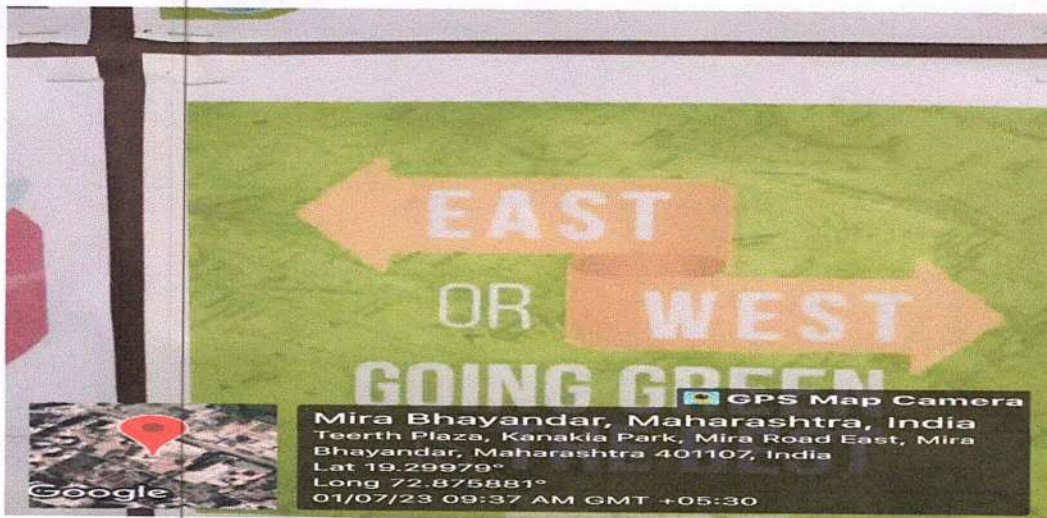
Shree Rahul Education Society's (Regd.)

# SHREE L. R. TIWARI DEGREE COLLEGE

(Arts | Commerce | Science) Approved By Government of Maharashtra & Affiliated To University Of Mumbai | Recognized Under Section 2(f) of the UGC Act 1956 | ISO Certified 9001: 2015 | Hindi Linguistic Minority Institution | COLLEGE CODE : 1064

## b. Plastic Free Campus:

The College has a clear policy for discouraging the use of plastic in its premises. As per the Policy Document on Plastic Free Campus, the College encourages the use of paper and cloth bags in place of plastic. The College adheres to green practices and accordingly, beverages are served in paper glass and so are the straws made of paper.







**d. Composting Pit:**





Shree Rahul Education Society's (Regd.)

# SHREE L. R. TIWARI DEGREE COLLEGE

(Arts | Commerce | Science) Approved By Government of Maharashtra & Affiliated To University Of Mumbai | Recognized Under Section 2(f) of the UGC Act 1956 | ISO Certified 9001: 2015 | Hindi Linguistic Minority Institution | COLLEGE CODE : 1064

## c. Nursery and Gardening area:





Shree Rahul Education Society's (Regd.)

# SHREE L. R. TIWARI DEGREE COLLEGE

(Arts | Commerce | Science) Approved By Government of Maharashtra & Affiliated To University Of Mumbai | Recognized Under Section 2(f) of the UGC Act 1956 | ISO Certified 9001: 2015 | Hindi Linguistic Minority Institution | COLLEGE CODE : 1064

## 5. Disabled-Friendly Barrier Free Environment

### a. Ramp:

For easy and smooth access to college premises, there is a ramp facility for handicapped students and a chair for Easy Access. Floors are barrier-free for easy movement of Persons with Disabilities (PwDs).





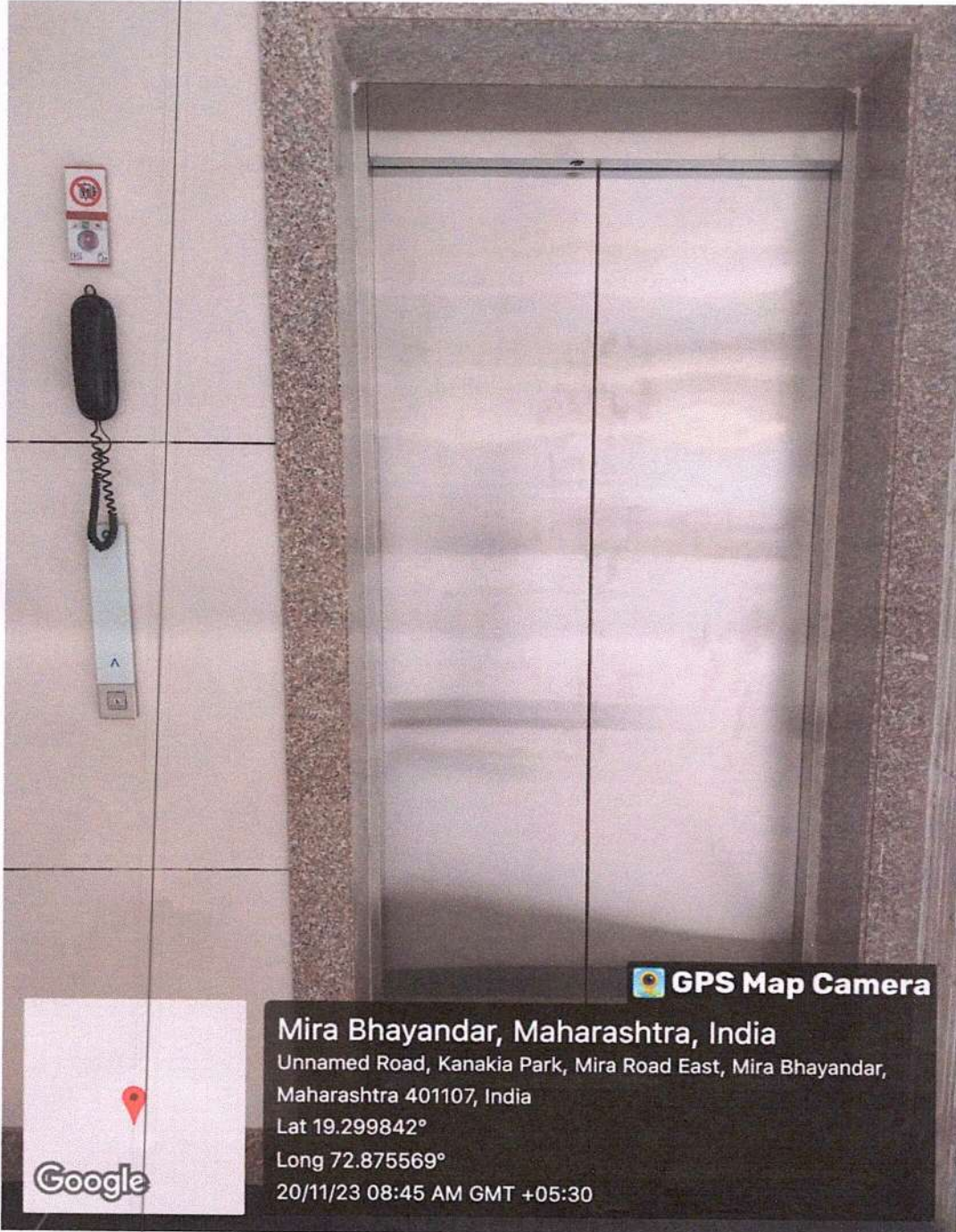
Shree Rahul Education Society's (Regd.)

# SHREE L. R. TIWARI DEGREE COLLEGE

(Arts | Commerce | Science) Approved By Government of Maharashtra & Affiliated To University Of Mumbai | Recognized Under Section 2(f) of the UGC Act 1956 | ISO Certified 9001: 2015 | Hindi Linguistic Minority Institution | COLLEGE CODE : 1064

## b. Elevators:

There are two Lifts/Elevators to provide barrier-free and smooth access to all floors, from ground to seventh. Both the lifts are available for all students. Persons with Disabilities are given entry in the lift on a priority basis.



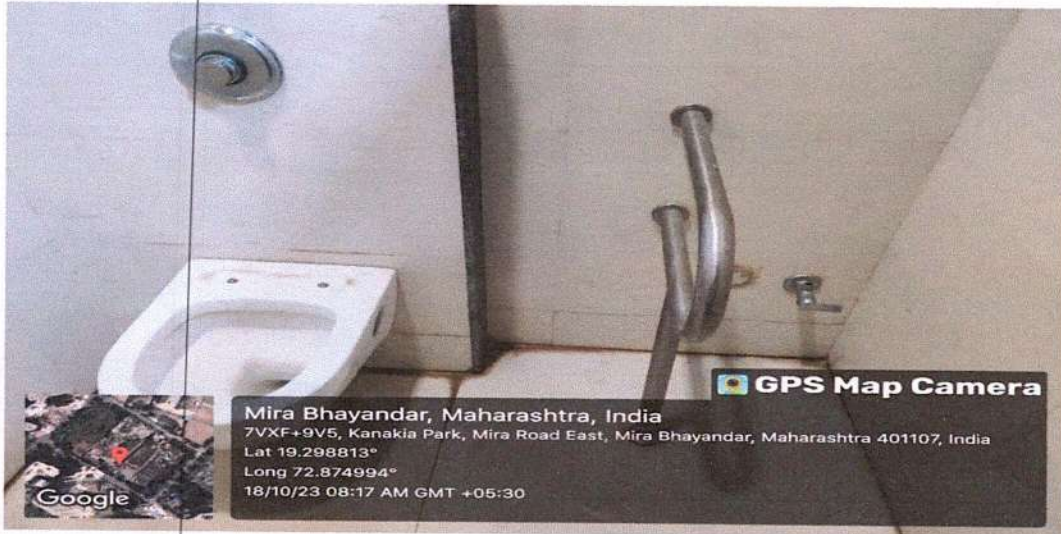


Shree Rahul Education Society's (Regd.)

# SHREE L. R. TIWARI DEGREE COLLEGE

(Arts | Commerce | Science) Approved By Government of Maharashtra & Affiliated To University Of Mumbai | Recognized Under Section 2(f) of the UGC Act 1956 | ISO Certified 9001: 2015 | Hindi Linguistic Minority Institution | COLLEGE CODE : 1064

**c. Disabled-Friendly Toilet:** By providing disability-friendly washrooms in a college, the institution demonstrates its commitment to creating an inclusive and equitable learning environment. This not only benefits students with disabilities but also promotes awareness and understanding among the entire student body.



**d. Wheelchair Facility:** Shree L. R. Tiwari Degree College proudly offers wheelchair accessibility, ensuring inclusivity for disabled individuals. With ramps and spacious corridors, navigating the campus is convenient. Our commitment to accessibility fosters an environment where everyone can pursue education with ease, promoting equality and diversity within our community.

